



EMMAUS
CHRISTIAN SCHOOL

ANNUAL REPORT

2014



Serving God and Serving Others

Our Core Values



Table of Contents

School Profile.....	4
Events in 2014.....	4
Enrolments.....	6
Students with Additional Needs.....	6
Attendance.....	6
National Testing Results.....	7
Staffing.....	9
Staff Attendance.....	9
Financial Information.....	10
Satisfaction Data.....	11
Conclusion.....	11

School Profile

Emmaus Christian School is located in the inner north Canberra suburb of Dickson. We provide quality Christian education from Pre-School through Year 10. We are single stream to Year 4. In 2014, we had two Year 5 classes, and a large Year 6 group who operated as a single class, with two teachers for core subjects. The Year 7 and 8 classes were double streamed in 2014, as the Secondary School continues to build toward double streaming all year levels.

The school is governed by the Board, elected by the parent members of the school association, the North Canberra Christian Education Association. The Board also oversees operation of Emmaus Christian Preschool.

Emmaus Christian School endeavours to provide an excellent academic education in a caring, Christian environment. Our dedicated staff looks to build partnerships with families as we seek to equip our students for service to God and their communities.

Events in 2014



Highlights of 2014 included our participation in the “Active Afters” program. Special thanks go to Miss Michelle Dempsey, who worked many extra hours to provide supervision for sporting activities two afternoons a week, and helped to organise special events such as the basketball clinic attended by some of our Year 5 students.

Colin Buchanan visited in a great community event organised by 2014’s Community Liaison officer, Mrs Samantha Thirkettle.





We welcomed new staff in 2014, including Mrs Sun Min Cho, our Korean teacher, Mr Mark Searle in IT support, Mrs Samantha Thirkettle in Community Development and Mrs Angela Breeze in Year 2.

Mr Terence Lynch was on staff for 2014, before moving away. He organised the Primary School Band as well as teaching music in the Secondary School, and kicked off the Secondary Band Program.

The Vocational Training Program in the Secondary School saw two students earn competencies toward trade qualifications in cooking.

Other highlights included our sporting carnivals, fun days, and our Primary and Secondary Productions.



“The Prince and the Pauper”,
Emmaus Primary School
Production 2014

Secondary Production,
2014



Enrolments

School Section	2010	2011	2012	2013	2014
Preschool Total	45	44	39	44	49
Primary Total	174	186	190	190	200
Secondary Total	86	87	102	106	129
Primary and Secondary Total	260	273	292	296	329
Whole School Total	305	317	331	340	378

Emmaus Christian School is a multi-cultural community, with one quarter of our students and one quarter of teachers having been born overseas. Amongst our parents and student body, more than thirty languages are spoken at home. 2% of our student body are Indigenous Australians.

We experienced record high enrolments in 2014, with particularly notable growth in the Secondary School as we build toward a double-streamed secondary. This is being supported by allowing for the possibility of larger classes and double streaming in the upper primary classes, with two Year 5 classes and a large Year 6 cohort in 2014.

The average class size in Primary school in 2014 was 25 students. In Secondary, year levels averaged 32 students, while subject class sizes were kept to approximately 18 students.

Students with Additional Needs

Our teaching staff members are ably assisted by the Learning Assistance team in identifying and supporting students with additional learning needs. Students are identified by parents or teachers, and a range of testing is undertaken to determine the best strategies to assist the student. Assistance can take the form of small group help, one-on-one extra teaching, or materials provided by the Learning Assistance team for use in the classroom. The LA team consisted of two teachers and two learning assistants in 2014.

Attendance

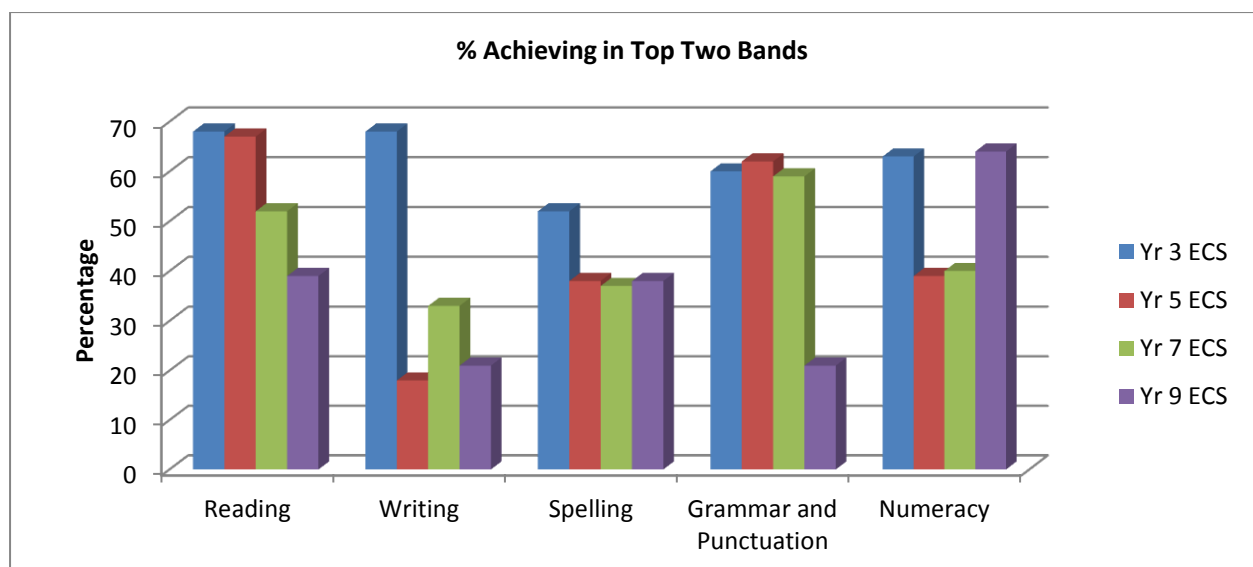
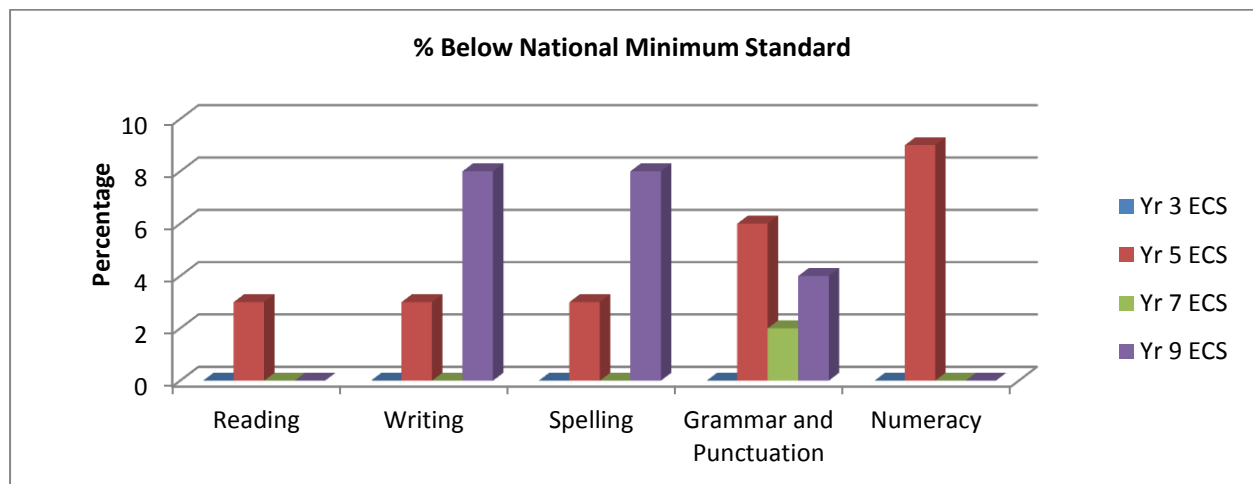
There were a total of 3604 student absences in 2014. Primary classes had an average attendance rate of 90.1% and Secondary classes had an average attendance rate of 84.5%. Parents are notified by SMS of any absence by 10 am, and are required to provide an explanation for the absence.

National Testing Results

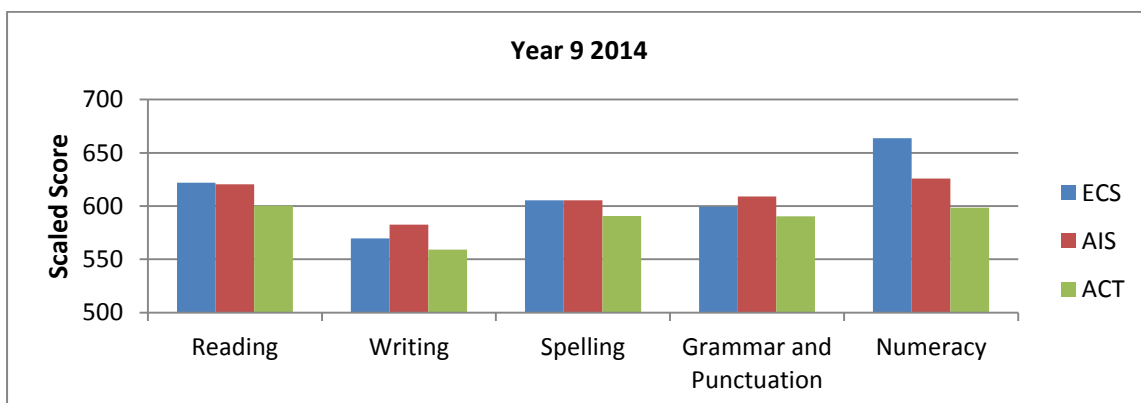
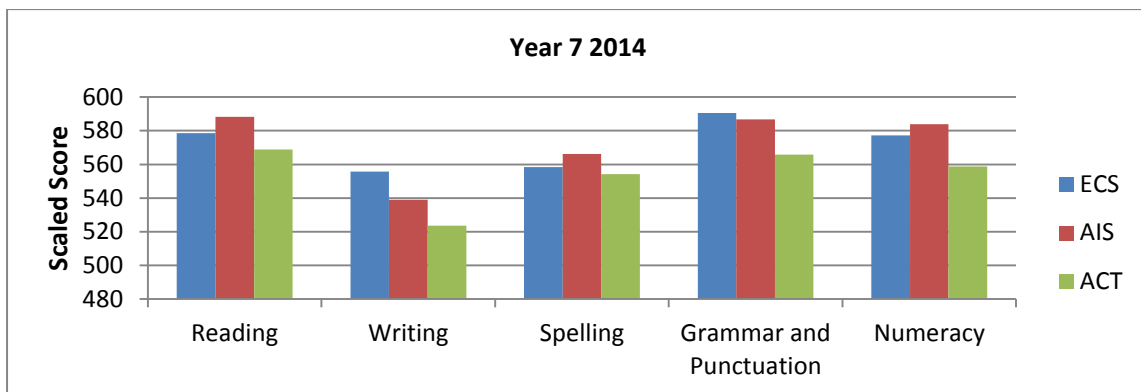
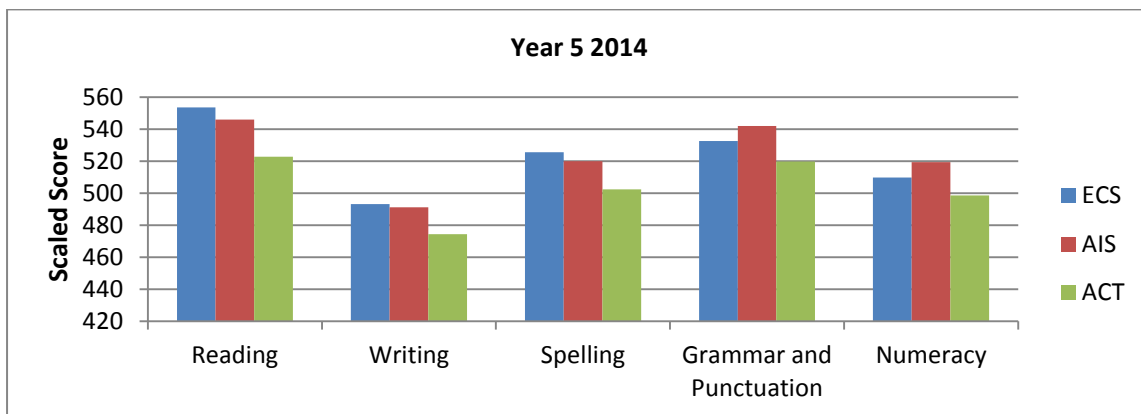
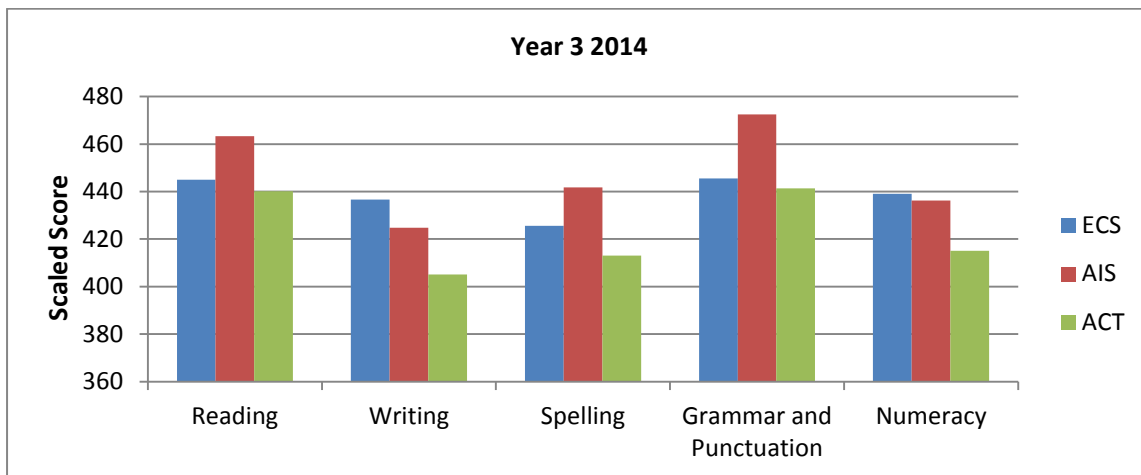
NAPLAN 2014 results indicate that our students are performing well against ACT averages, which are the highest in the country. In several areas, students also out-performed the average of ACT Independent schools. It is important to remember in a small school that we are looking at small sample sizes and the difference from one year's cohort of students to the next can be quite variable.

Congratulations must go to the Year 9 maths class of 2014, who worked hard with their teacher to achieve an average score ranking 2nd in the ACT, just one point behind the top score. We were also identified as having achieved well above the average growth in scores between Year 7 and Year 9 in Mathematics.

Student Achievement Graphs



NAPLAN Scores by Year Level



Staffing

Emmaus Christian School employs qualified teachers. In 2014, all of our teachers held a Bachelor's Degree or higher and were accredited by the Teacher Quality Institute of the ACT.

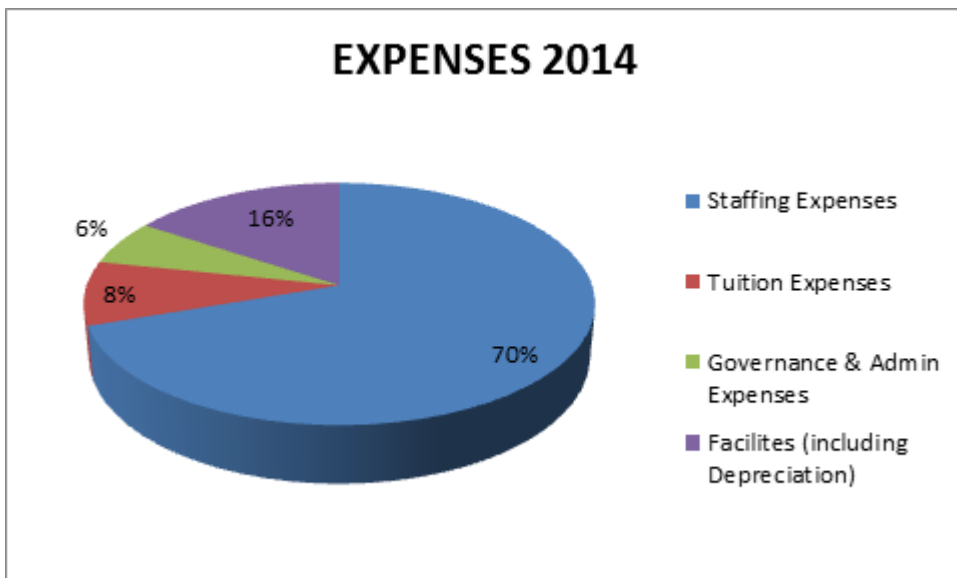
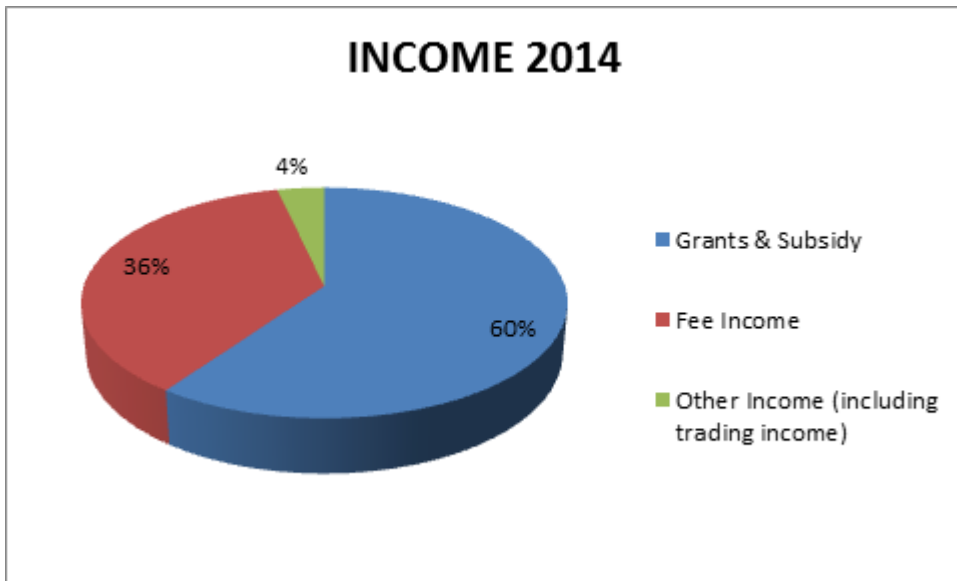
Staffing Profile 2014			
Category	Description	Number	Full Time Equivalent
Executive Staff	Principal, Primary and Secondary Coordinators	3	3.0
Teaching Staff	Classroom Teachers, Learning Assistance Teachers	22	17.2
Learning Assistants	People providing extra assistance in the classroom	2	1.6
Support Staff	Bursar, receptionist, enrolments, accounts, IT, cleaning, maintenance, After School Care, website maintenance, library	17	14.25
		44	36.05

During 2014, all staff completed a minimum 20 hours each of Professional Learning. This included whole-school Professional Learning based on school priorities, other PL based on teachers' individual professional goals, a peer observation program, and a Christian Education National staff retreat in the July holidays. A first aid course was made available to staff who needed to renew their certification and allergy and anaphylaxis training was provided to all staff at the beginning of the year.

Staff Attendance

We had a full-time equivalent of 36.05 staff members, giving a total of 6849.5 days of attendance at school. The staff took a combined 292 days of leave, for reasons including illness and family obligations. This is an overall attendance rate of 96%.

Financial Information



INCOME 2014

Grants & Subsidy	\$2,806,291.64
Fee Income	\$1,714,104.56
Other Income (including trading income)	\$169,359.48
	\$4,689,755.68

EXPENSES 2014

Staffing Expenses	\$3,239,915.16
Tuition Expenses	\$397,511.66
Governance & Admin Expenses	\$279,248.41
Facilities (including Depreciation)	\$730,864.59
	<hr/>
	\$4,647,539.82
	<hr/>

The main capital expenditure items for 2014 included:

- 55 x iPads
- Replace roller shutter doors in gym
- 4 x Tubas for Music
- Upgrade current and purchase extra projectors
- Primary Lockers
- Finalise demountable building works
- Roller door for front entry
- Carpet Year 7 & Corner room in Secondary

Satisfaction Data

A parent survey was conducted in 2014 to which we received 70 replies, 42 from primary school and 28 from secondary school. 95.7% of parents indicated that they were satisfied with the school's performance.

Of the limited number of students surveyed in 2014, 85% indicated that they were satisfied with the teaching they received at school. A more comprehensive survey of the student body is being undertaken in 2015.

14 members of staff completed surveys in 2014, with all of them reporting satisfaction with their jobs.

Conclusion

2014 was a year of record student enrolments at Emmaus Christian School. We thank God for His faithfulness over the 17 years of the school's journey, and look to the future with excitement. Goals for the future include double streaming of the Secondary School and new buildings on site to house the extra students. I would like to thank the Board, staff, parents

and students for making Emmaus Christian School such a unique place to learn and grow together in community.