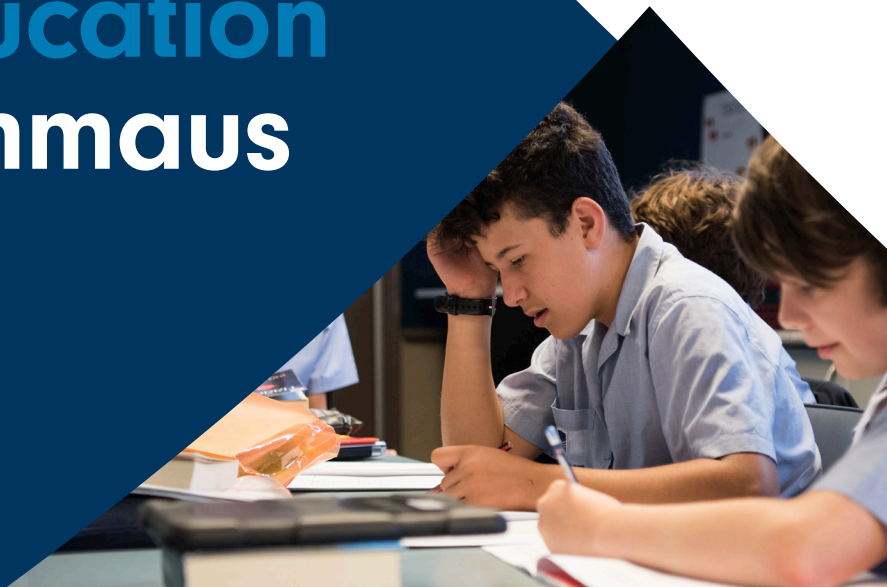




**Emmaus
Christian
School**

**Believe
in a gospel
led education
with Emmaus**

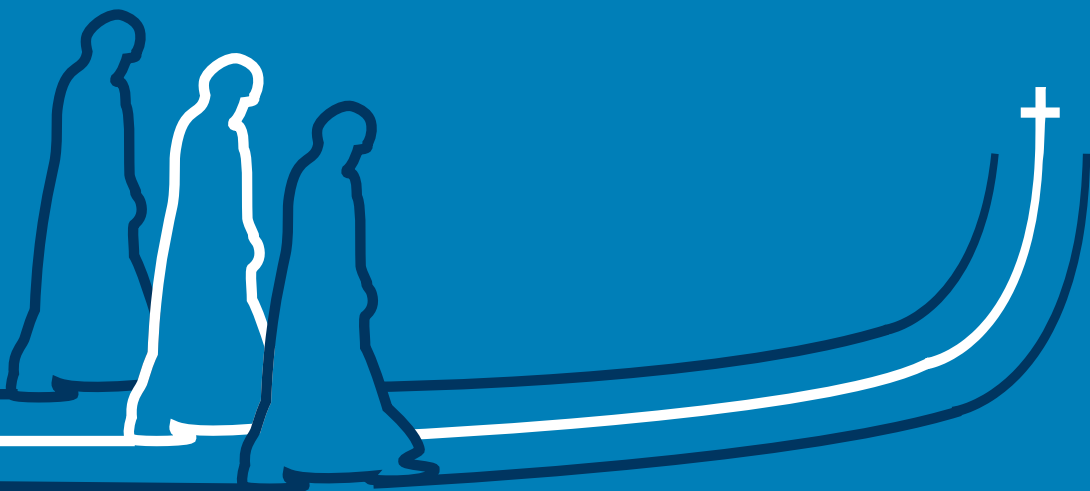


Two men were travelling along the road to Emmaus after the death of Jesus. They were so sad, they could have walked and talked for days and never overcome their disappointment.

'As they talked and discussed these things with each other, Jesus himself came up and walked along with them.
(Luke 24.15)

As Jesus spoke, their hearts burned hearing Him teach the scriptures. The transformation was complete. The mourners had become teachers. They went on to share the good news with others.

Emmaus aims to share this same life changing news and relationship with Jesus, with their students.



The Principals Welcome

Emmaus is a beautiful small school in the leafy Inner North of Canberra.

At Emmaus Christian School, Christ is at the centre of everything we teach, learn and believe. The gospel of Jesus Christ is integrated and embedded in all that we do. At our school, we believe that the gospel is at the heart of the curriculum and central to all teaching and learning.

The Christian education at Emmaus is an engaging partnership between home and school life. It is essential that all the parents of our students subscribe to and agree with the ethos of our school.

As all families face challenges, our school will come alongside our families and support, affirm and magnify all that determines a gospel-shaped community. Christian education at Emmaus includes an open and transparent challenge for all staff and students to reach their goals and so bring glory to our living God.

Our school staff take their duty seriously to provide a high-quality teaching and learning program – one that is seasoned and balanced with warm and engaging pastoral care. The consistent high standards of academic results and family-like school culture are evidence of the care and commitment of our staff.

I hope this prospectus provides you with a good introduction of our school and I look forward to a time when I meet you and your family.

Yours in Christ,



Mr Erik Hofsink
Principal

A handwritten signature in blue ink, consisting of a large, stylized 'E' followed by a smaller, more complex flourish.

Community Beginnings


Emmaus is a co-ed, Preschool to Year 10 school, in the established suburb of Dickson.

Our school was established in 1997 by an enthusiastic group of parents who were keen for gospel-led educational options in North Canberra.

They started the North Canberra Christian Education Association in mid 1996 and Emmaus Christian School commenced in January 1997 with 88 pupils. We grew to 175 pupils in 1999, each year committed to a class size as close to 25 as possible.

In 2002, our Secondary School was established and in 2004, we moved into our newly constructed Secondary building. Today the school has more than 350 students.

We continue to seek the best possible teachers, curriculum and facilities to give our students an excellent Christian education.



Emmaus is a member of the Association of Independent Schools ACT and Christian Education National.

The Core Values of Emmaus



Caring for Others

We value, care for and respect each other because we are all made in the image of God. We partner with parents to care for and develop the whole person – body, soul and spirit. We foster a sense of belonging, celebrate one another's achievements and choose to be grateful for our school and each other. We are a community that learns in a fun, creative, encouraging and generous environment.



Striving for Mastery

We encourage students to strive for excellence in all aspects of life: in study, work, and in relationships with God and with people. We believe God equips every person with gifts and abilities. We seek to instil in our students, a strong desire to apply their utmost to what they do, an attribute that will long outlive their school years. Students are encouraged to master and apply academic and life skills to make the most of their opportunities in later life. Our goal is to equip students with the necessary skills and understanding to make wise and Godly choices, and to live resilient, fulfilled, and productive lives.



Equipping for Service

Our motivation for service is the love that Christ has shown us: his life of servant leadership is the example we seek to follow. Staff at Emmaus model integrity, accountability and the value of excellence in our work. We strive to equip students with both the desire and the skills to make a difference in the lives of others. We aim to grow students who are rich in Godly wisdom and noble character, and find their security in the love of Christ.

We are a community that learns in a fun, creative, encouraging and generous environment.


Academic Excellence

Our school consistently performs well above average in the national government benchmark testing, NAPLAN. We believe a sound education comes from a rigorous curriculum combined with a supportive well-being program. A true measure of a school is how well it takes students from where they sit academically and improves their results. Therefore, our goal is to nurture and value each student individually to help them achieve at their God-given potential.

The development of strong and positive Christian values and character, effective social skills and generous community service attitudes are key tasks at which Emmaus excels.

Facilities

While we are small, we have great facilities. We offer our students a high quality Christian education with access to excellent equipment and co-curricular activities. This includes art, drama and music, and woodwork facilities, a commercial standard food technology room, a science lab, shaded play equipment, a gymnasium and outdoor courts.

A photograph of a young person with long brown hair, wearing a dark green school polo shirt with a blue collar and white piping on the sleeve. They are looking down and to the right. The photo is partially cut off by the right edge of the page.

"Emmaus is a good school because they understand me. I also feel safe and calm at school."

Madi – Year 3



Emmaus exists to partner with parents, in providing a Christ-centred, Biblically-grounded and academically-rigorous education, which enables students to grow in wisdom and character, to the glory of God.

What makes us different

- A supportive Christian community focused on the needs of each student.
- Firm, caring discipline with an award winning social skills program called 'Brave Talk'.
- Attention to student concerns - arguments and disputes, feelings of injustice and friendship issues.
- A focus in Secondary School on building confidence alongside excellence and success.
- A strong community where parents and teachers work together to develop the whole child.
- Strong parent involvement.
- Staff and Board members who come from a variety of evangelical Christian convictions, which we honour.
- Recognition of the distinction between a school and a church. We do not seek to be a church or even a para-church.





**"We get to know the
word of God and have
a great education."**

Jared – Year 4

Believe in a grounded education that prepares students for the future with Emmaus

"My teachers are genuinely passionate about what they teach; their excitement & knowledge make for an atmosphere in which students can experientially grow in their own knowledge and understanding of the topic."

Grace – Year 9



Our goal is to equip students with the necessary skills and understanding to make wise and Godly choices, and to live resilient, fulfilled, and productive lives.



Preschool

Emmaus Preschool is a very special place offering 3 and 4 year-old children their first experience of engaging, enjoyable and exciting play-based learning. This provides them with a holistic preparation for school and a seamless transition to Kindergarten.



Primary School

Emmaus Primary school offers a focused introduction to formal learning through Junior Primary (Kindy to Year 2). The learning program is centred around a phonics-based language development extending into Upper Primary (Years 3-5) providing students with the best possible start to their life of learning; academically, socially and spiritually.



Middle School

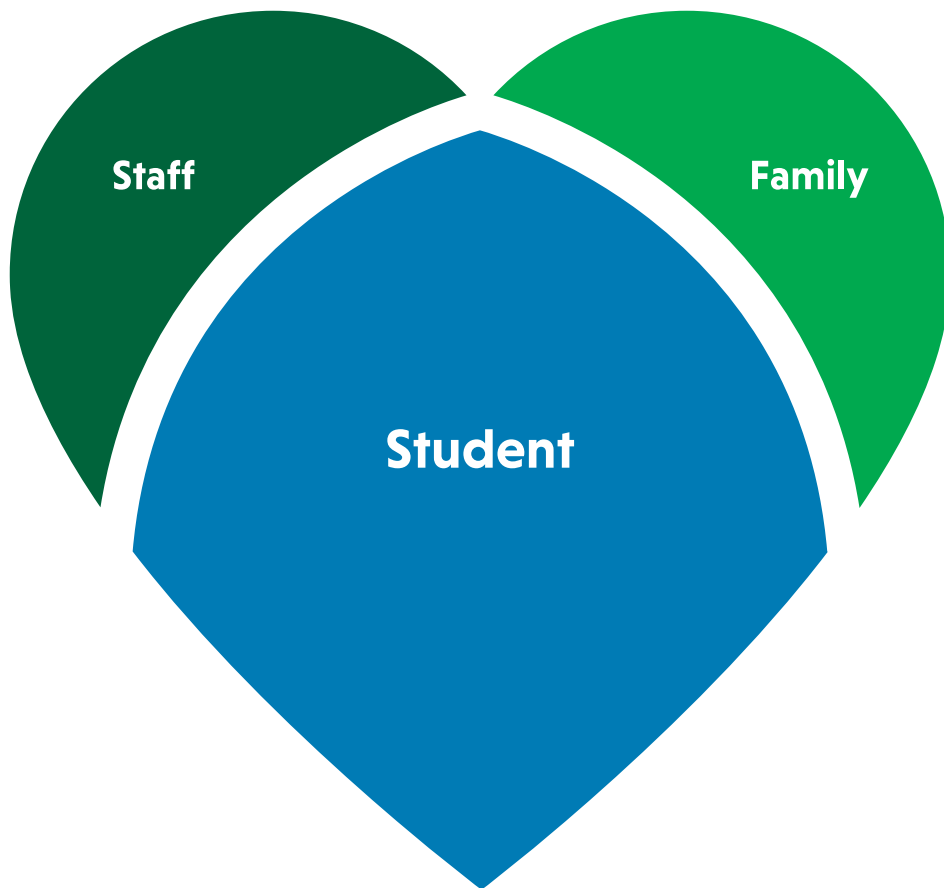
Since 2018 Emmaus introduced a Middle School providing Year 6-8 students with an intentional connection between Primary and Secondary School experiences. Emphasis in Middle School is on social and academic transitions through an enquiry based learning approach and richly marinated in thinking from a Biblically informed view of the world.



Senior School

Emmaus Senior school extends learning into an elective based program. Years 9-10 continue building a strong core subject base (Science Technology, English and Mathematics) into a varied and vocation driven exploration. This is seasoned with deeper thinking on matters pertaining to a Christian worldview and its implications on life in this world. For this reason, Emmaus is currently exploring its options to extend into Senior Secondary (Year 11 and 12).

We believe it takes a village to raise a child.



At Emmaus we believe in fostering a community that places the child at the centre of the learning experience.





Students Leading the Future

We foster enthusiastic students who are prepared to lead confidently and with purpose. They are conscientious learners who embody compassion, dedication and faith.

Passionate Staff

We have passionate teachers, caring administrative staff, and a fantastic community who all work together to make this a wonderful and safe place of belonging.

Family is Everything

We foster a close partnership with the families of our students to ensure their whole person is nurtured. Our community is supportive and we take care of one another in times of need.



Join our friendly Emmaus community.

We have designed a step-by-step process to make it easy for you to enrol at Emmaus. If you have any queries about the enrolment process, you are welcome to contact our friendly Enrolment Officer.

Contact Details

For general enquiries

emmaus@emmaus.act.edu.au

For all information regarding enrolments

enrolment@emmaus.act.edu.au

P 02 6247 7151

73 Davenport St

Dickson ACT 2602

emmaus.act.edu.au



Get to Know Us



Tour the School



Get Ready to Enrol



Enrolment Application



Letter of Acknowledgement



Interview



Offer of Enrolment

Believe with Emmaus



emmaus.act.edu.au

The Spirit of Emmaus

We at Emmaus...

Speak and work with purpose and honesty,
hear and understand God and his people,
dream big dreams, are open and receptive.

Teachers who...

are full of enthusiasm and fun,
watch it spill over and catch on,
respect, trust and care, love children.

Students who...

look positively to their future in God's plan,
are empowered to learn for life,
trust God and care for one another,
are lifted above the ordinary.

Together with God we...

set goals and develop the vision,
find our goals met,
encourage creativity and innovation,
see results beyond our expectations.